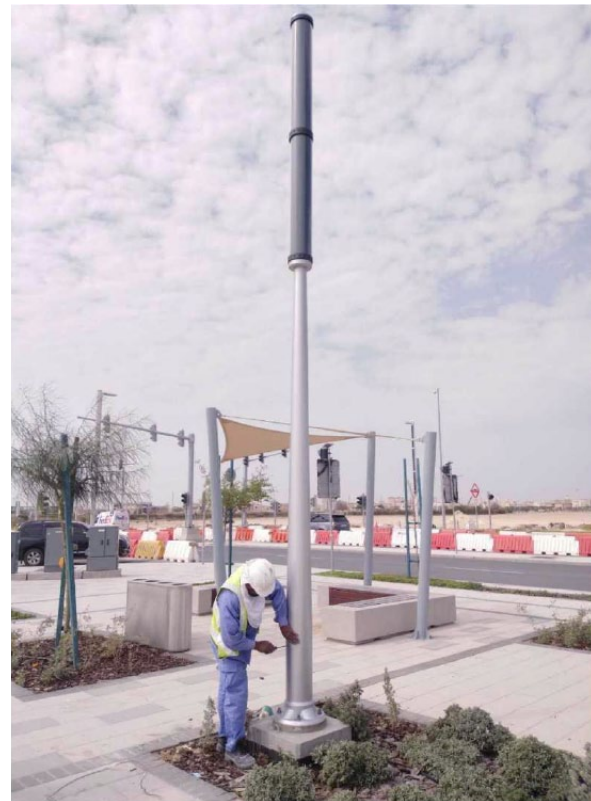


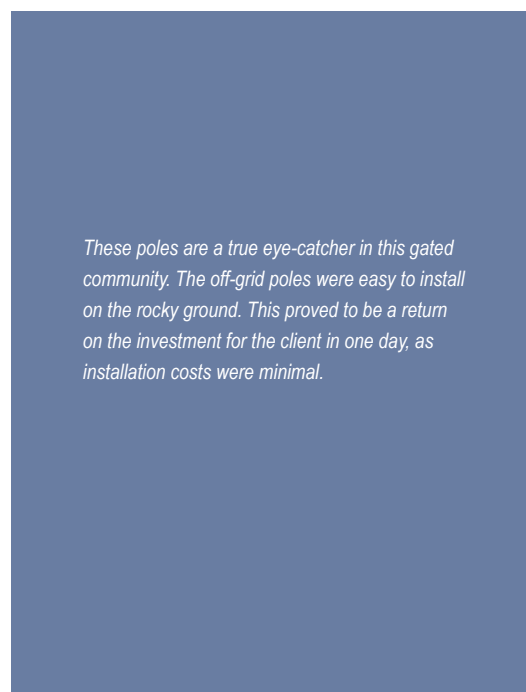
DUBAI



SHANGHAI



*Equip the Hugeshine with one or two luminaires of your own choice, just as is done on this brand new parking lot in Maastricht, the Netherlands.*



*These poles are a true eye-catcher in this gated community. The off-grid poles were easy to install on the rocky ground. This proved to be a return on the investment for the client in one day, as installation costs were minimal.*





**State-of-the-art technology**

Developed with world leading partners, the products feature the best solutions in all minor details. Every single product is extensively tested, to ensure only the highest quality is delivered.

Hugeshine solar pole can be equipped with MPPT control equipment and customized sim chip, which can be adapted to local smart lighting platform through APL



The smart design makes it possible to configure Hugeshine products to your specific application.

Various foundation types can be used to anchor the poles in the ground. We offer a special ground

Hugeshine products are made for easy maintenance. Failures or defects can be detected remotely, reducing maintenance costs while increasing reliability.

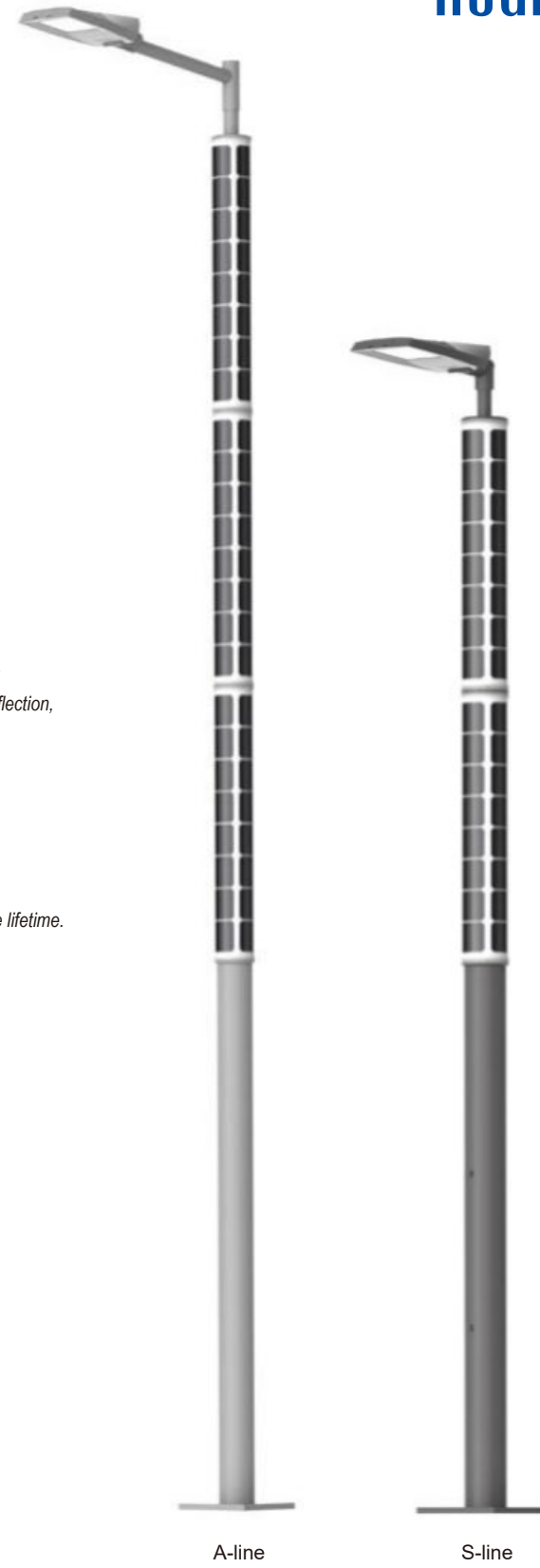
**Poles that are built to last**

The Hugeshine technology is what makes the products unique, but the supporting pole structure is just as special. All poles are designed specifically for the Hugeshine, resulting in an aesthetic and durable street light that is easy to install. All Hugeshine products come with a cylindrical pole; this creates an astonishing look and also offers superior resistance against deflection, torsion and buckling.

There are 2 types of pole constructions to choose from:

- S-line: Galvanized powder coated steel
- A-line: Aluminium (marine grade 6061 T66 alloy)

Hugeshine poles get their final look by powder coating or anodization. This creates a smooth finish and ensures a beautiful look throughout the entire lifetime. It is also possible to provide the system on a crash-friendly pole. Or choose a wooden pole, for a natural look!



**Hugeshine light pole models**



| Cylindrical Component Technical Specification |                        |                        |                        |
|---|------------------------|------------------------|------------------------|
| Electrical Properties                         |                        |                        |                        |
| Component Type                                | Single crystal silicon | Single crystal silicon | Single crystal silicon |
| Pmax [W]                                      | 161 W                  | 141 W                  | 120 W                  |
| Isc [A]                                       | 4.9 A                  | 8.57A                  | 7.35 A                 |
| Voc[V]  | 44.28 V                | 22.14 V                | 22.14 V                |
| Imp[A]  | 4.545 A                | 7.95 A                 | 6.81 A                 |
| Vmp[V]  | 35.4 V                 | 17.7 V                 | 17.7V                  |
| Structural Parameters                         |                        |                        |                        |
| Product Size                                  | 1330mm ( L ) * Φ253    | 1330mm ( L ) * Φ203    | 1330mm ( L ) * Φ185    |
| Inner Diameter                                | Φ240                   | Φ192                   | Φ174                   |
| Weight  | 7.8 Kg                 | 5.9 Kg                 | 4.8Kg                  |
| Color   | Black                  | Black                  | Black                  |
| Working Temperature                           | - 40 °C ~ + 85 °C      | - 40 °C ~ + 85 °C      | - 40 °C ~ + 85 °C      |
| Working Humidity                              | 0 % ~ 60 %             | 0 % ~ 60 %             | 0 % ~ 60 %             |